

# **SWED/CUT<sup>®</sup>**

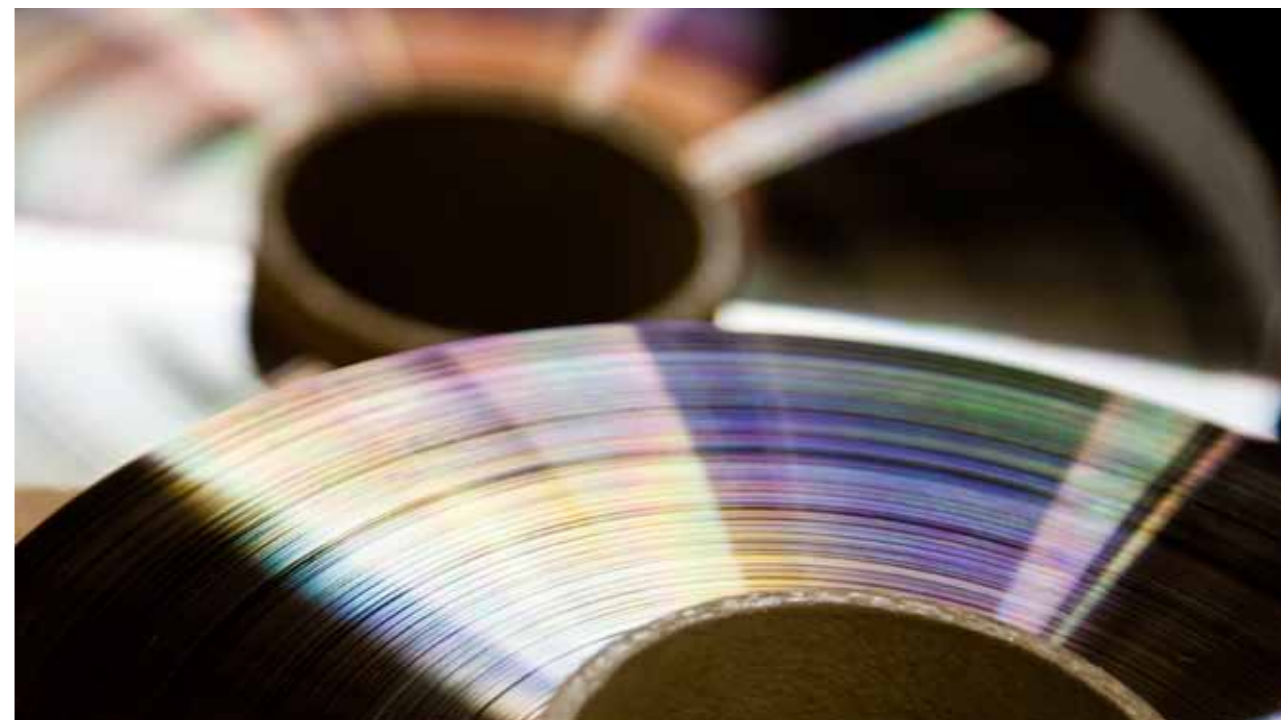
**PRINTING DOCTOR BLADES**



**SWED/CUT**<sup>®</sup>  
PRINTING DOCTOR BLADES

# PREMIUM DOCTOR BLADES

SWED/CUT<sup>®</sup> BY SWEDEV



## **® DESIGNED, ENGINEERED AND MANUFACTURED BY SWEDEV AB**

**Since the company was founded in 1985, it's no coincidence SWED/CUT<sup>®</sup> has grown to become "the brand of choice" of quality printers and converters around the world. That's because our entire product line is developed to meet their specific needs.**

The very core of our commitment to developing process improving products and services is reflected in our name – SWEDEV AB which stands for Swedish Development Company.

Today, our standard product offering includes more than one thousand different combinations of materials, material treatments, dimensions and edge treatments. In addition, we have the ability to custom engineer products for individual or proprietary applications.

### **YOUR SUCCESS IS OUR BUSINESS**

It all starts on your production floor – Our product development extends to our customers. We partner with leading flexographic

and rotogravure printers and coaters around the world to learn about specific metering application needs. We then work together to develop cost effective solutions which often include in-your-plant technical support and training.

Therefore, we proudly say –  
"Your Success is Our Business"

# SWEDISH CERTIFIED QUALITY

**The Swedish steel industry has evolved over hundreds of years and today is recognized the world over for its ability to produce steel of the highest quality. That's why we produce our doctor blades in Sweden. Swedev AB origins from this industry. This is our heritage!**

However, it takes more than just high quality steel to make the best doctor blade. Through close collaboration with our mill's R&D, we are able to develop our own specifications. Rigidity, straightness, blade life, edge wear and even reduced print defects are all

determined by metallurgical qualities achieved at each step of the steel making and blade finishing process.

Every aspect of our product's manufacture, from product design to the product in-the-box you receive, is governed by a strict ISO 9001 and ISO 14001 Certified Quality Assurance Program. This means the product you come to rely upon is the one you will receive each and every time!

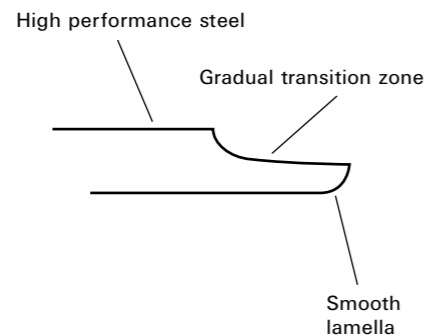


ALL THE MACHINES WE USE ARE DESIGNED AND DEVELOPED BY SWEDEV, AND ARE MANUFACTURED IN ONE OF THE COMPANIES WITHIN THE MUNKFORS INDUSTRI AB GROUP.



## OUR PRODUCTION – YOUR EDGE ON QUALITY

In addition to perfecting premium high performance steels for various doctor blade applications, we have developed a number of proprietary methods and techniques to create a consistently smooth lamella, bevelled and radius edge. As an example of an improvement made resulting from our partnering with printers, the transition zone of our lamella edge is gradual rather than steep – allowing the tip to flex without breaking.



In addition to certain industry standards for edge dimensions, we customize edge width, thickness and tapering to best suit your special application needs.

Our flexible production lines allow us to quickly reset our machines to be able to deliver special or unusual products at the customer's request.

## QUALITY INSPECTION

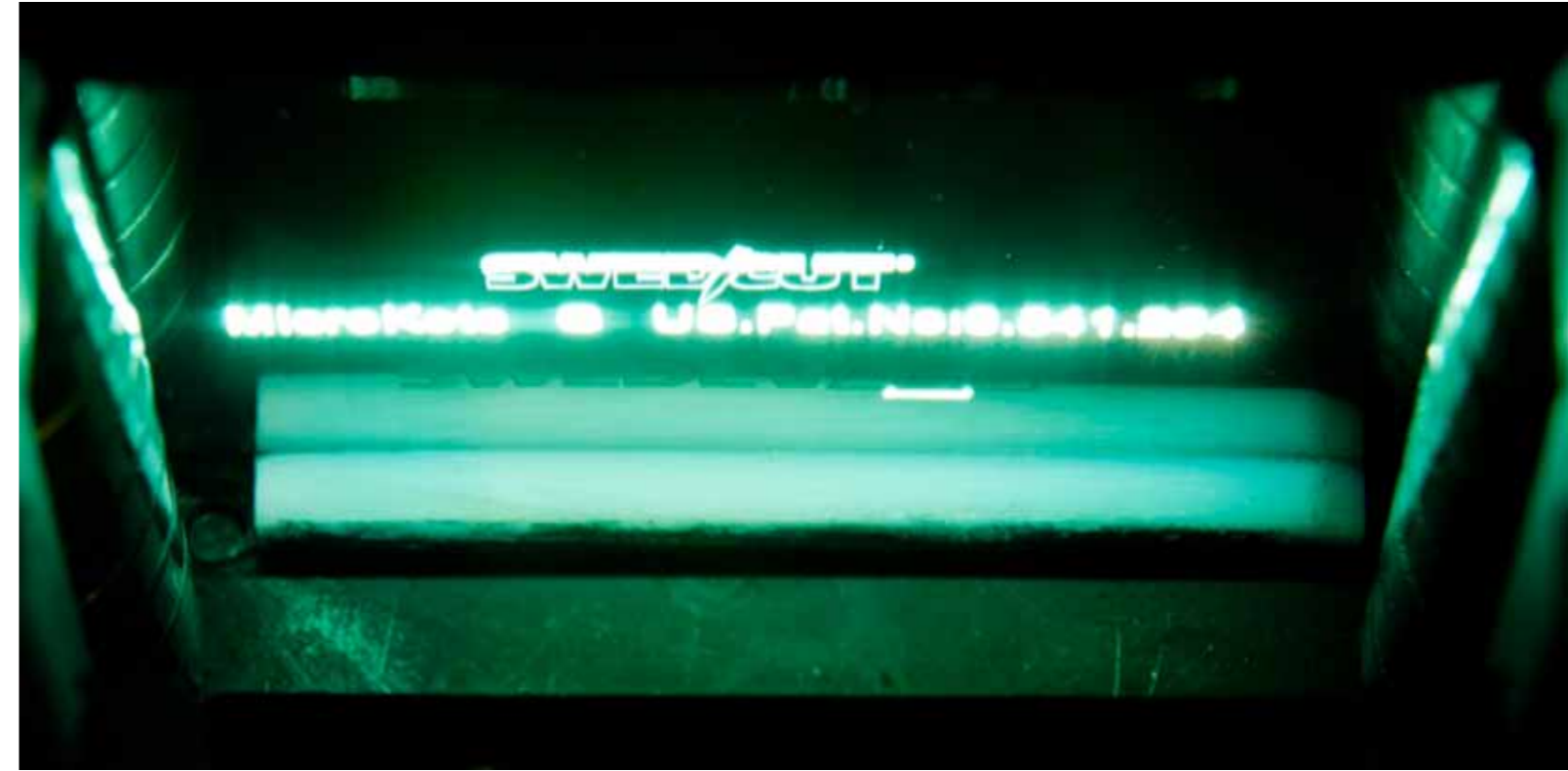
To be assigned the brand name SWED/CUT®, each and every millimetre of doctor blade manufactured by Swedev AB must pass a number of intense quality inspections using the latest high-tech equipment at various steps in the production process.

In addition to the quality inspections in the production process the final edge inspection is made by using the extremely sensitive finger tip!

We maintain complete traceability of all products we produce and ship!

Of course the production process is certified according to the ISO 9001 Quality Assurance Program.





## SPECIAL APPLICATION HIGH PERFORMANCE BLADES

MicroKote® is a proprietary and patented surface coating developed by Swedev AB. The ink repellent qualities of the overall coating prevent large particulate in the ink from collecting behind the blade. The result is a profound reduction in streaks and other blade related print defects. In addition, the coating at the tip area is enhanced to extend blade life significantly.

**Important Note:** Because MicroKote® was developed together with printers, the life enhancing qualities are not achieved by using ceramics or other super hard, cylinder wearing agents. Instead, many printers using MicroKote® report extended life on most cylinders in addition to reduced print waste.

MicroKote® has developed into an expanding line of coated blades capable of meeting even the most demanding applications.

**Look for our trademark on every blade!**

## CONTINUOUS IMPROVEMENTS

Our high quality products are developed in close co-operation with printers and steel mills. Constant development allows us to consistently offer products that are perfectly adapted to customer needs. We invest a great deal of resources into continuously developing our products in order to exceed customer expectations.

Our high level of expertise within the area of material results in us being among the absolute leaders in producing doctor blades.

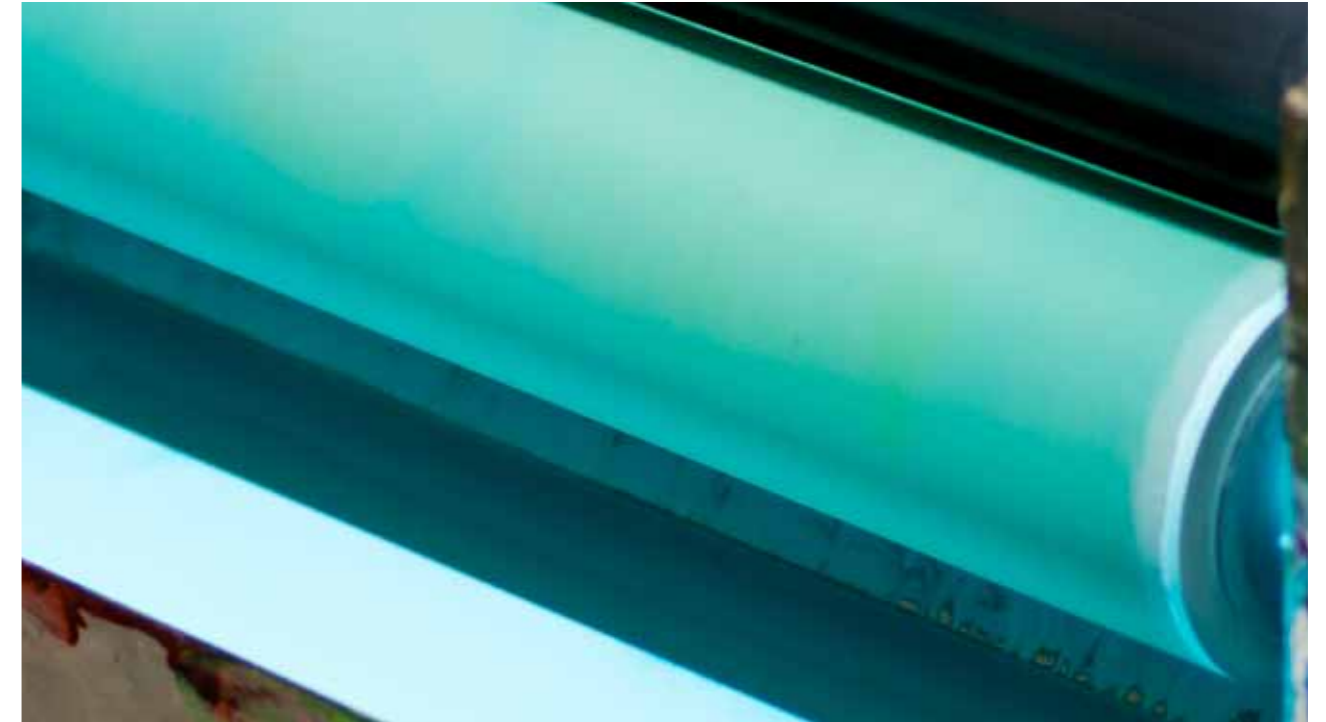
Troubleshooting at our customers' plants forms part of our constant process of improvement and development.



## AVAILABILITY PRODUCT DISTRIBUTION

---

In addition to maintaining a stock of all popular blade materials and dimensions at our premises in Sweden ready to ship, our network of distributors maintains local stock around the world. We distribute directly to more than 70 countries and our products are sold in many more.

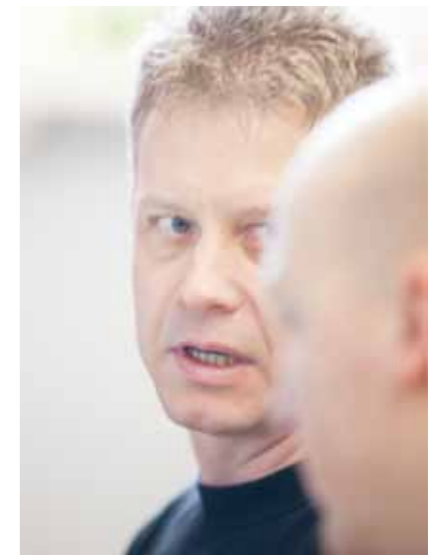


## TECHNICAL SUPPORT

---

Swedev offers technical support worldwide and maintains a qualified staff of experienced printing technicians who work together with our customers to develop cost effective solutions which often include in-your-plant technical support and training.

Troubleshooting at our customers' plants is an important part of our constant process of improving and developing our products.



## PLASTIC BLADES

**Ester Flex®**  
100

**POLYESTER**  
Containment Blade.

**WIDTH** .79" - 5" 20.0 mm - 127.0 mm  
**THICKNESS** .014" - .125" 0.35 mm - 3.2 mm

**Comp Flex™**  
200

**COMPOSITE BLADE**

**MAX WIDTH** 2.5" 63.5 mm  
**THICKNESS** .015" - .028" 0.37 mm - 0.71 mm

## COATED BLADES

**Micro Kote S®**  
700 S

**MICRO CARBON STEEL BLADE**  
Proprietary ultra durable long life coating.

**WIDTH** .39" - 2.76" 10.0 mm - 70.0 mm  
**THICKNESS** .006" - .015" 0.15 mm - 0.38 mm

**Micro Kote G®**  
700 G

**MICRO CARBON STEEL BLADE**  
With modified coating for extremely sensitive conditions.

**WIDTH** .79" - 2.76" 20.0 mm - 70.0 mm  
**THICKNESS** .006" - .015" 0.15 mm - 0.38 mm

**Micro Kote X®**  
700 X

**MICRO CARBON STEEL BLADE**  
Specially alloyed and purified. Proprietary ultra durable long life coating.

**WIDTH** .39" - 2.36" 10.0 mm - 60.0 mm  
**THICKNESS** .006" - .015" 0.15 mm - 0.20 mm

**Micro Kote II®**  
800

**MICRO STAINLESS STEEL**  
Blade. Proprietary ultra durable long life coating.

**WIDTH** .39" - 2.36" 10.0 mm - 60.0 mm  
**THICKNESS** .006" - .008" 0.15 mm - 0.20 mm

## HIGH PERFORMANCE STEEL BLADES

**M-Flex I®**  
300

**CARBON STEEL BLADE**  
High density. Refined micro structure.

**WIDTH** .27" - 3.15" 7.0 mm - 80.0 mm  
**THICKNESS** .003" - .015" 0.076 mm - 0.38 mm

**Micro Nox I®**  
400

**STAINLESS STEEL BLADE**  
High corrosion resistance.

**WIDTH** .39" - 2.36" 10.0 mm - 60.0 mm  
**THICKNESS** .003" - .015" 0.076 mm - 0.38 mm

**Micro Nox II®**  
500

**STAINLESS STEEL BLADE**  
High corrosion and wear resistance.

**WIDTH** .79" - 5" 20.0 mm - 127.0 mm  
**THICKNESS** .014" - .125" 0.35 mm - 3.2 mm

**M-Flex II®**  
600

**CARBON STEEL BLADE**  
High density. Ultra refined micro structure.

**WIDTH** .39" - 2.76" 10.0 mm - 70.0 mm  
**THICKNESS** .006" - .008" 0.15 mm - 0.20 mm

**M-Flex Plus®**  
600 P

**CARBON STEEL BLADE**  
Specially alloyed and purified for extra wear resistance and ductility.

**WIDTH** .39" - 2.36" 10.0 mm - 60.0 mm  
**THICKNESS** .006" - .008" 0.15 mm - 0.20 mm

**ALL OUR DOCTOR BLADES CAN BE DELIVERED IN COILS OF 100 METERS OR AS PRE-CUT LENGTHS ACCORDING TO CUSTOMER'S REQUEST.**

## EDGE SELECTION GUIDE STEEL

**BEVEL EDGE TYPE 10**



Customer designed.  
According to the need.

**RADIUS EDGE TYPE 25**



**LAMELLA EDGE TYPE 50**



Customer designed.  
According to the need.

## EDGE SELECTION GUIDE PLASTIC/COMPOSITE

**BEVEL EDGE TYPE 10**



**STRAIGHT EDGE TYPE 25**



**DACC TYPE 50**





## INVESTING IN THE ENVIRONMENT IS AN INVESTMENT IN QUALITY

In Sweden, maintaining the quality of the earth's environment has long been an important issue. At Swedev AB, we have made large investments in completely self contained waste recycling systems that separate and purify water from solids. While the condensed solids are refined for recycling the remaining water has a consistently low conductance which enhances its use in the electromechanical reaction in our blade surface treatments.

We are constantly working on reducing our impact on the environment, for example we have significantly reduced our consumption of water and electricity.

The management system of Swedev AB is certified according to the ISO 14001 Environmental Quality Assurance Program.



**SWED/CUT**<sup>®</sup>  
PRINTING DOCTOR BLADES

# CUSTOMIZED DOCTORING SOLUTIONS





**SWEDEV AB**

P.O. Box 57  
SE-684 22 Munkfors  
Sweden

Phone: +46 (0)563 530 00

Fax: +46 (0)563 530 30

E-mail: [info@swedev.se](mailto:info@swedev.se)

SWEDEV AB IS A MEMBER  
OF MUNKFORS INDUSTRI AB

[order@swedev.se](mailto:order@swedev.se)

[www.swedev.se](http://www.swedev.se)